



# Delhi Public School, Howrah

PERIODIC TEST II - (2024-2025)

Class-XI

Care must be taken not to write anything on the question paper. All the questions must be attempted in the correct sequence.

**SUBJECT: ECONOMICS (CODE-30)**

**Time Allowed - 3 Hours**

**Maximum Marks - 80**

## General Instructions:

1. This question paper contains two sections:  
Section A – Statistics for Economics  
Section B – Micro Economics
2. This paper contains 20 Multiple Choice Questions type questions of 1 mark each.
3. This paper contains 4 Short Answer Questions type questions of 3 marks each to be answered in 60 to 80 words.
4. This paper contains 6 Short Answer Questions type questions of 4 marks each to be answered in 80 to 100 words.
5. This paper contains 4 Long Answer Questions type questions of 6 marks each to be answered in 100 to 150 words.

### **PART -A**

#### **STATISTICS FOR ECONOMICS**

1.	Given are two statements. Choose the correct option from the options given below: Statement I: The sum of deviation of items from median is zero. Statement II: Median is unduly affected by extreme observations.  a) Statement I is true and II is false. b) Statement II is true and I is false. c) Both the statements are true. d) Both the statements are false.	1
2.	The data contained in the poverty estimates and literacy conducted by the government is called- a) Internal data b) Secondary data c) Primary data d) External data	1
3.	Read the following statements given as Assertion (A) and Reason (R). Choose one of correct alternatives given below:  Assertion (A) : Textual presentation of data is most suitable when the quantum of data is not very large. Reason (R) : A serious drawback of the textual presentation of data is that one has to go through the entire text before quantitative facts about a phenomenon became evident. Alternatives : a) Both Assertion (A) and Reason (R) are true and Reason (R) is the correct explanation of Assertion (A). b) Both Assertion (A) and Reason (R) are true but Reason (R) is not the correct explanation of Assertion (A). c) Assertion (A) is true but Reason (R) is false. d) Assertion (A) is false but Reason (R) is true.	1

4.	<p>Which of the following is affected by extreme values?</p> <p>a) Mean b) Median c) Mode d) Both a and c</p>	1
5.	<p>Choose the correct sequence of the given functions of statistics related to the formulation of economic plans:</p> <p>(i) Use of a measure of analysis (ii) Organisation &amp; presentation of data (iii) Collection of data (iv) Interpretation of data &amp; forecasting.</p> <p>Alternatives:</p> <p>a) ii, iii, iv, i b) iii, i, ii, iv c) iii, ii, i, iv d) i, iii, ii, iv</p>	1
6.	<p>Which of the following statements is true about the 'collection of data'?</p> <p>a) The use of information helps to save both time and money. b) The use of primary data helps to save both time and money. c) The use of secondary data helps to save both time and money. d) The use of data helps to save both time and money.</p>	1
7.	<p>It is possible to _____ the magnitude of sampling error if we take a _____ sample.</p> <p>a) Increase, smaller b) Decrease, larger c) Decrease, smaller d) None of the above</p>	1
8.	<p>Read the following statements given as Assertion (A) and Reason (R). Choose one of correct alternatives given below:</p> <p>Assertion (A) : Statistics is a delicate science and it can be easily misused by an untrained person. So data must be used with a caution. Reason (R) : The statistical methods are unable to study the nature of phenomenon which can't be expressed in quantitative terms.</p> <p>Alternatives :</p> <p>a) Both Assertion (A) and Reason (R) are true and Reason (R) is the correct explanation of Assertion (A). b) Both Assertion (A) and Reason (R) are true but Reason (R) is not the correct explanation of Assertion (A). c) Assertion (A) is true but Reason (R) is false. d) Assertion (A) is false but Reason (R) is true.</p>	1

9. Match the following:

1

Column I		Column II	
A	Temporal Classification	(i)	Bus Route No. as per the area/ location covered
B	Geographical Classification	(ii)	Covid Vaccination data based on age group
C	Qualitative Classification	(iii)	No of workers on the basis of their wage level
D	Quantitative Classification	(iv)	Performance of a student in past 4 years

Alternatives :

- a) A - (i), B - (ii) , C - (iii), D - (iv)
- b) A - (iii), B - (ii) , C - (i), D - (iv)
- c) A - (ii), B - (iii) , C - (iv), D - (i)
- d) A - (iv), B - (i) , C - (ii), D - (iii)

10. Which of the following statements is correct?

1

- I. Frequency distribution is a comprehensive method that helps in the classification of raw data.
- II. The inclusive class intervals are used on a frequent basis in the case of continuous variables.
- III. A good sample helps to provide totally accurate information about the population.
- IV. The histograms are drawn only for continuous variables.

Options:

- a) I only
- b) I and III only
- c) IV only
- d) I, II and IV

11. Find the missing frequency form the following data, if arithmetic mean is 25.4.

3

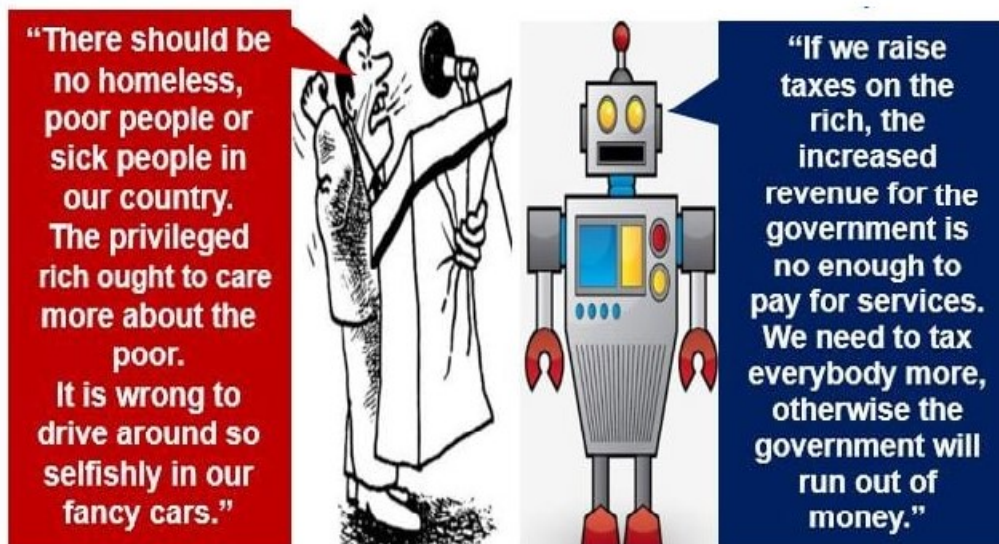
Class-interval	10-20	20-30	30-40	40-50	50-60
Frequency	20	15	10	?	2

OR

The Average age of 20 students in a class is 16 years. One student whose age is 18 years has left the class. Find out average age of rest of the students.

12.

3



Interpret the above picture by comparing the concepts depicted.

13. Identify the method of sampling of the following situations and state one limitation of each method.

4

- i. An Economics teacher has initiated a portfolio work in class IX, which is to be done in the group of five.
- ii. There is a debate competition in your school. Being a debate club in charge you have been entrusted with the responsibility of selecting the best orator from class XI.

14. Draw a histogram from the following data relating to the monthly pocket allowance of the students of Class XI of a school:

4

Size	0-5	5-10	10-15	15-20	20-25	25-30	30-35	35-40
Number of students	5	10	15	20	25	15	10	5

15. Calculate arithmetic mean from the following data by short-cut Method:

4

Class Interval	20-25	25-30	30-35	35-40	40-45	45-50	50-55
Frequency	10	12	8	20	11	4	5

OR

State two merits and two demerits of mean.

16. Calculate mode of the following distribution:

6

Marks	10-19	20-29	30-39	40-49	50-59	60-69	70-79	80-89	90-99
Number of students	29	87	181	247	263	133	40	9	2

17. Calculate mode of the following series using the graphic technique. Counter check the modal value with the formula. 6

Wage	0-10	10-20	20-30	30-40	40-50
Number of Workers	28	46	54	42	30

OR

Determine the value of median from the following data with the help of 'More than' ogive. Counter check the modal value with the formula.

Marks	0-5	5-10	10-15	15-20	20-25
No of Students	6	8	10	6	4

**PART-B**  
**MICROECONOMICS**

18. "Amar stepped out of his school van and his mother who was waiting for his arrival received him. Before the van driver left, he informed Amar's mother that school van service fare will be increased by ₹ 50 from next month onwards. Being enquired about the reason for such an increase in the school van fare, the driver informed that it is due to a high rate of inflation in the economy." The rate of inflation as mentioned in the above scenario is studied as part of the 1

- a) Microeconomics
- b) Macroeconomics
- c) Statistics
- d) Indian Economic development

19. Assume that a PPF for butter and guns is drawn so that it is a straight line. It means: 1
- a) Less and less units of butter are sacrificed to gain an additional unit of gun.
  - b) More and more units of butter are sacrificed to gain an additional unit of gun.
  - c) Same unit of butter are sacrificed to gain an additional unit of gun.
  - d) Less and less units of gun are sacrificed to gain an additional unit of butter.

20. Read the following statements given as Assertion (A) and Reason (R). Choose one of correct alternatives given below: 1
- Assertion (A): The slope of demand curve describes consumer behaviour.  
Reason (R): The consumer increases his or her quantity demanded as the price goes up.
- Alternatives:
- a) Both Assertion (A) and Reason (R) are True and Reason (R) is the correct explanation of Assertion (A).
  - b) Both Assertion (A) and Reason (R) but True and Reason (R) is not the correct explanation of Assertion (A).
  - c) Assertion (A) is True but Reason (R) is False.
  - d) Assertion (A) is False but Reason (R) is True.

21.	<p>Which of the following statements reflects the actual relationship between the marginal opportunity cost and production possibility frontier?</p> <p>a) When the marginal opportunity cost remains constant, the production possibility frontier is a downward sloping straight line.</p> <p>b) When the marginal opportunity cost remains constant, the production possibility frontier is an upward sloping straight line.</p> <p>c) When the marginal opportunity cost remains constant, the production possibility frontier is a central sloping straight line.</p> <p>d) There is no relation between the marginal opportunity cost and the production possibility frontier.</p>	1
22.	<p>Given are two statements. Choose the correct option from the options given below:  Statement I: Allocation of the resources comes under the causes of central problems.  Statement II: An economy is a system that helps in the production of goods and also enables people to earn a living.  Choose the correct option from the options given below:</p> <p>a) Statement I is true and II is false.</p> <p>b) Statement II is true and I is false.</p> <p>c) Both the statements are true.</p> <p>d) Both the statements are false.</p>	1
23.	<p>Suppose that my daily marginal benefit from drinking coke increases by \$2 per bottle. Which of the following represents the effect of this on my pepsi demand curve?</p> <div style="display: flex; flex-wrap: wrap;"> <div style="width: 50%;"> <p>a)</p> </div> <div style="width: 50%;"> <p>b)</p> </div> <div style="width: 50%;"> <p>c)</p> </div> <div style="width: 50%;"> <p>d)</p> </div> </div>	1

24.	<p>Read the following statements –  Assertion (A): A consumer attains equilibrium at a point where budget line is tangent to IC.  Reason (R): At the point of tangency IC is convex to origin.  Alternatives:</p> <p>a) Both Assertion (A) and Reason (R) are true and Reason (R) is the correct explanation of Assertion (A).  b) Both Assertion (A) and Reason (R) are true but Reason (R) is not the correct explanation of Assertion (A).  c) Assertion (A) is true but Reason (R) is false.  d) Assertion (A) is false but Reason (R) is true.</p>	1
25.	<p>Which of the statements below is correct?</p> <p>I. The utility is a function of the intensity of desire.  II. Utility means want-satisfying power.  III. The desire for consumption gives birth to utility.  IV. When TU is maximum, MU becomes zero.</p> <p>Options:</p> <p>a) I only  b) I and II  c) I and III  d) I, II, III and IV</p>	1
26.	<p>The line that depicts all different combinations of two goods that a consumer can buy by spending all of his income is called _____.( income and the price of two goods are given)</p> <p>a) production line  b) iso-cost line  c) price ratio  d) budget line</p>	1
27.	<p>Given are two statements. Choose the correct option from the options given below:  Statement I: Demand for red roses on Valentine’s day is relatively inelastic compared to other days.  Statement II: The degree of necessity of goods or services will affect the value price elasticity demand .</p> <p>Choose the correct option from the options given below:</p> <p>a) Statement I is true and II is false.  b) Statement II is true and I is false.  c) Both the statements are true.  d) Both the statements are false.</p>	1
28.	<p>What does the shape and slope of PPF indicate?  OR</p> <p>a. Dev has three career offers to choose from. Job X has a salary offer of Rs 60000, job Y offer is Rs. 70000 and job Z offer is Rs. 80000. Dev opts for job offer Z and the next best alternative not chosen is job offer Y .Identify and explain the economic concept for which Dev has opted for Job Z.</p> <p>b. Illustrate the problem for ‘whom to produce’ refer to?</p>	3

29. Suppose a consumer wants to consume two goods which are which are available only in integer units. The two goods are equally priced at Rs. 10 and the consumer's income is Rs.40.

a. Write down all the bundles that are available to the consumer.

b. Among the bundles that are available to the consumer, identify those which cost her exactly Rs. 40.

30. If the fixed cost of a firm is Rs.12, calculate TVC, TC , ATC and AVC.

Output(units)	1	2	3	4	5	6
MC ( Rs.)	9	7	2	4	8	12

OR

Find the missing values and complete the following table:

Output (Units)	Marginal Cost (MC) (Rs.)	Average Variable Cost (AVC) (Rs.)	Average Fixed Cost (AFC) (Rs.)	Average Cost (AC) (Rs.)
1	?	?	?	140
2	?	45	?	?
3	45	?	30	?
4	?	48	22.5	?
5	?	52	18	?

31. Read the following Case Study carefully and answer the questions on the basis of the same:  
 If our income rises, we generally tend to buy more of the goods. More income would mean more pens, more shirts, more shoes, more cars and so on. But there are exceptions. If initially, you are buying coarse grain, how would you take your increase in income now? Perhaps, as a first step, you would discard the consumption of inferiors. Surely, this happens in the deserts of Rajasthan where the rich minority eats wheat while the poor majority eats Bajra as their staple food.

a. "But there are exceptions. " What exceptions were highlighted in the above case?

b. Illustrate any three such exceptions other than the above mentioned one.

32. DPS Howrah recently hosted Chanakya Chetana 2024. DPS Howrah's Inter school event exemplified a cost-effective and innovative approach. The school minimized expenses by utilizing existing resources, transforming its own premises into a vibrant venue for the event. Several schools participated in this event. Stationary items and refreshments, saplings and gifts for the judges along with their transportation fare were the only financial expenses required. What set this event apart was the active involvement of students; the President, Vice President and Emcees were chosen from the school's own ranks, thus fostering leadership skills. DPS Howrah truly succeeded in hosting a successful Chanakya Chetana inter school business event that was thoroughly appreciated by the judges.

a. Identify the different costs incurred by the school to conduct the above event and mention its types.

b. Differentiate between the types of cost by providing another suitable example.

33

Comment on the shape of the MR curve in case the TR curve is a

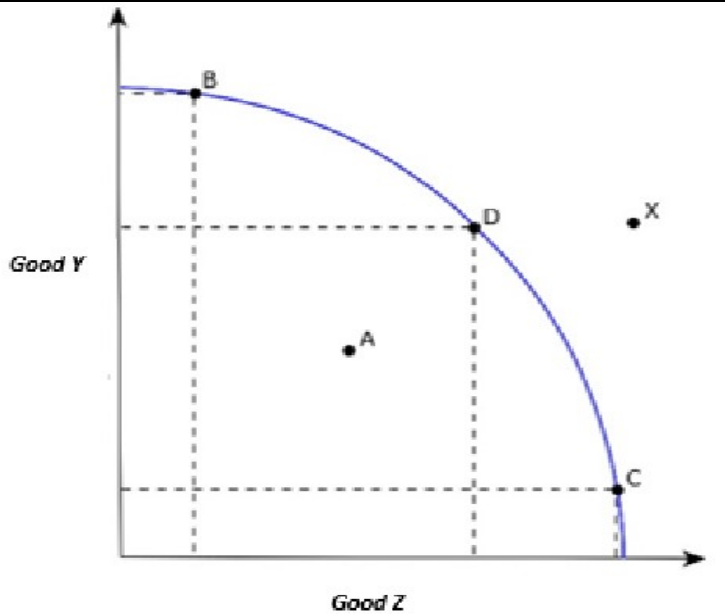
- (i) Positively sloped straight line,
- (ii) Horizontal straight line.

OR

What are the different phases in the Law of Variable Proportions in terms of Total Product? Give reasons behind each phase. Use diagram.

6

34



6

Look at the above diagram and answer the following questions

- i. Identify the above diagram and illustrate the significance of point A, X, B, C and D.
- ii. State any two assumptions of the above concept.
- iii. Is/are there any possibility(s) to shift this curve?